



**PAS**

# Installation Guide

---

BG0608 Rev. A1

# Table of Contents

- Chapter 1 Installation .....3
  - 1. Scope.....3
  - 2. Minimal installation requirements .....3
  - 3. Pre-installation steps.....3
  - 4. Installation steps .....4
  - 5. First time run .....4
- Chapter 2 Troubleshooting.....5
  - 1. ODBC driver .....5
  - 2. USB driver .....6
  - 3. USB driver – Windows 10.....7
  - 4. Setup and mdb files.....8

# Chapter 1      Installation

## 1. Scope

This installation guide is applicable to PAS v1.5.1 and higher.

## 2. Minimal installation requirements

1. This SW requires .NET Framework 4.5 and higher. Thus, it cannot be installed on Windows XP and Windows Vista. It can be installed on Windows 7/8/10.
2. You must be logged as administrator, or make sure you have administrator rights.

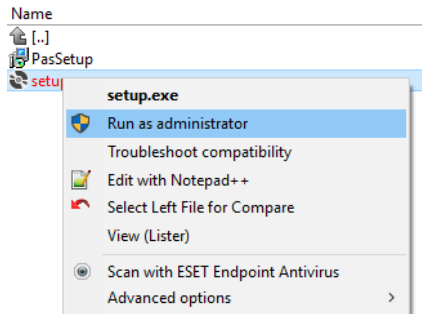
## 3. Pre-installation steps

1. Only one instance of PAS SW can be installed on PC. Thus each time new version of PAS SW is going to be installed, the previous version of PAS must be uninstalled:
  - a. For Windows 7: Open Control Panel->All Control Panel Items->Programs and Features, find PAS SW and press *Uninstall*
  - b. For Windows 8/10: Open Control Panel->Programs->Programs and Features, find PAS SW and press *Uninstall*
2. **It is recommended to back up your PAS folder before you uninstall the PAS SW.**
3. For Windows 10: review section [USB driver – Windows 10](#) in the Troubleshooting section.

## 4. Installation steps

Following are the steps of the full PAS installation process.

1. Make sure there is no a SATEC USB device connected to your computer.
2. Run *setup.exe* as administrator



3. Choose installation folder. Default *C:\Pas* is recommended.
4. In the Protection Mode window, check protected or non-protected mode. In the protected mode, each time you run PAS SW, you will be prompted to enter username/password for authentication. In non-protected mode, no authentication will be required, when running PAS SW.
5. If protected mode was chosen, enter username / password that will be used later for authentication. Following are the username / password rules:
  - a. Latin characters should be used for typing.
  - b. Username must contain at least 2 characters.
  - c. Password must contain at least 6 characters with at least one letter and one digit.
6. If previous PAS setup exists, you will be prompted to choose, whether to proceed with an old setup, or to install a default one. Setup is defined as a *Sites* folder and *PasConfig.mdb* file. If you choose to keep your old setup, then your *Sites* folder and *PasConfig.mdb* file will be preserved, and when you open newly installed PAS, it will include all your previous configurations and sites. Would you choose to install a default setup, your previous PAS setup will be erased. Previous PAS setup exists due to the fact that the uninstaller keeps the setup during uninstall process.
7. If a backup copy of the previous PAS installation exists, then the whole setup (*PasConfig.mdb* and *Sites* folder) can be copied into newly installed PAS directory (e.g. *c:\Pas*). This will allow to run newly installed PAS with exactly the same setup, as it was before.

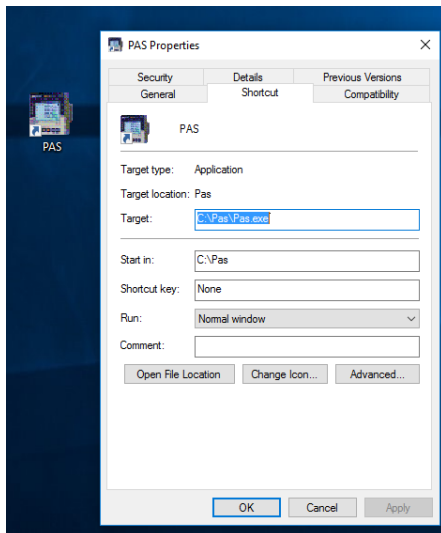
## 5. First time run

First time run requires administrator privileges. Right click *Pas.exe* and use *Run as Administrator* option.

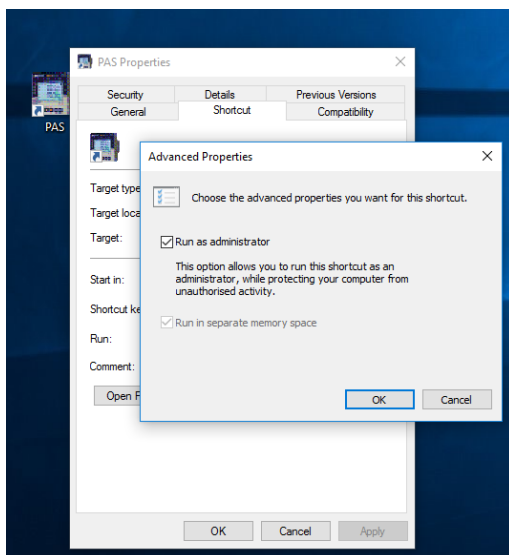
## Chapter 2 Troubleshooting

### 1. ODBC driver

Some Windows configuration requires administrative privileges each time you access ODBC driver. In this case it is not enough to run *Pas.exe* as administrator for the first time only. You need to run as administrator each time. Prepare a shortcut for *Pas.exe*, right click on it to get properties dialog



Click *Advanced...* button, and in Advanced Properties dialog check *Run as administrator* check box. Then twice OK.



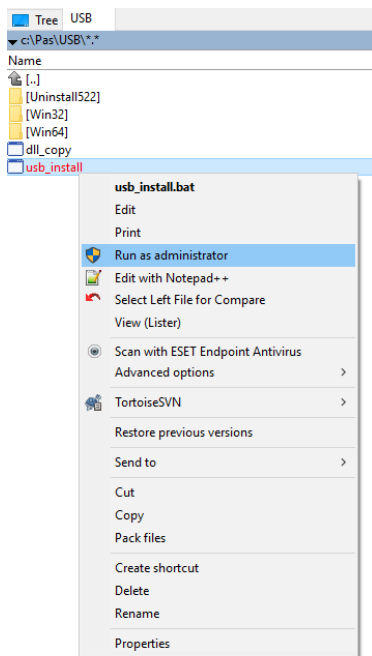
## 2. USB driver

Following reasons may cause USB driver not to be installed or to malfunction:

- Installation of the PAS SW without *Run as administrator*
- Installation of the PAS SW when SATEC USB device is connected to the PC
- Major Windows update

In the above cases USB driver should be manually installed again. Following are instructions to install USB driver **after** PAS SW was installed:

- In the PAS installation folder file *USB* directory (e.g. *c:\Pas\USB*)
- Disconnect any SATEC USB device from the PC
- Run *usb\_install.bat* as administrator



### 3. USB driver – Windows 10

Windows 10 disables unsigned drivers installation by default. This configuration should be changed in order to install SATEC USB driver. Following steps should be performed to disable driver signature enforcement in Windows 10:

- a. Press the Windows button and click on Settings.
- b. Click on Update & Security.
- c. Click on the Recovery option on the left hand side.
- d. An Advanced Startup section will appear on the right hand side. Click on the Restart now button.
- e. The computer will reboot. Choose the Troubleshoot option.
- f. Click on Advanced options.
- g. Click on Startup Settings.
- h. Click on Restart, which will reboot the computer and display a list of startup settings that can be changed.
- i. Select Disable driver signature enforcement by pressing the F7 key
- j. The computer will reboot. Proceed with the USB driver installation or full PAS installation.

#### **4. Setup and mdb files**

If your PAS setup (PasConfig.mdb and Sites folder) was occasionally removed, but a backup copy of the previous PAS installation exists, then the whole setup (PasConfig.mdb and Sites folder) can be copied into the active PAS directory (e.g. c:\Pas). This will recover the database to the state, where it was during the backup.