

# Addendum

**This addendum is applicable to the following document:**

Series PM174 Powermeter and Power Quality Analyzer Installation and Operation Manual - BG0411 Rev. A7

**Specification change:**

PM174 modification with 4 Digital Inputs / 4 Relay Outputs

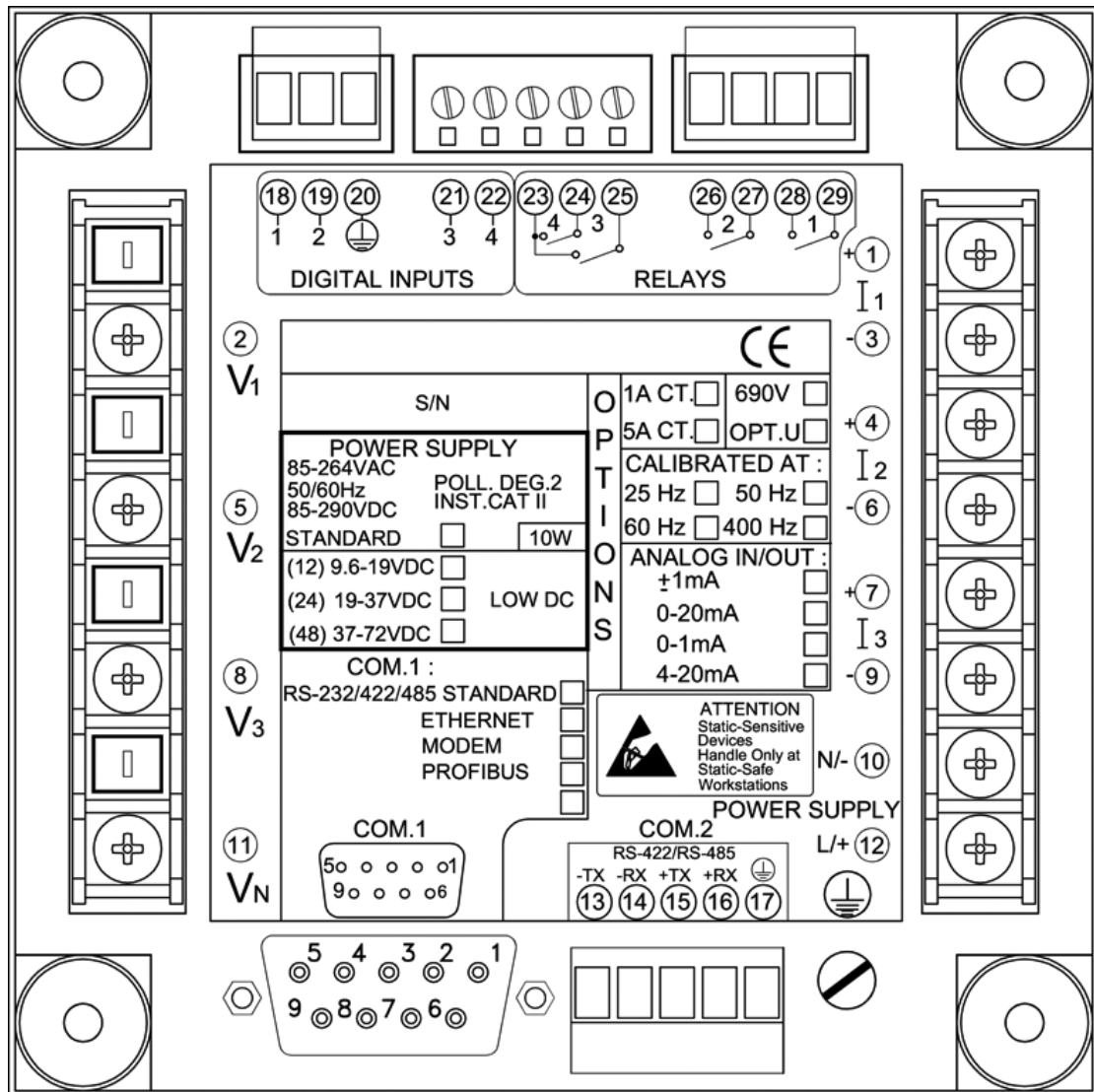


Fig. 1. PM174 with 4DI/4DO rear panel

The new 2DI/2DO module is added instead of Analog I/O module and uses 5-pin connector of the Analog I/O.

Two additional DI have terminal numbers 21 and 22 (see Fig. 1). Two additional relays (terminals 23, 24, 25) have a common pole (terminal 23).

Additional relays are of the same type as the ones of basic configuration:  
Relays rated at 3A/250 VAC, 3A/30 VDC, 2 contacts (SPST Form A).

Digital Inputs connection diagram is shown in the “PM174 Operation and Installation Manual” (Chapter 2 “Installation”, “I/O Connections”, “Digital Inputs”).

Digital Inputs setup is configured as described in the “PM174 Operation and Installation Manual” (Chapter 4 “PAS Application Software”, “General Meter Setup”, “Using Digital Inputs”).

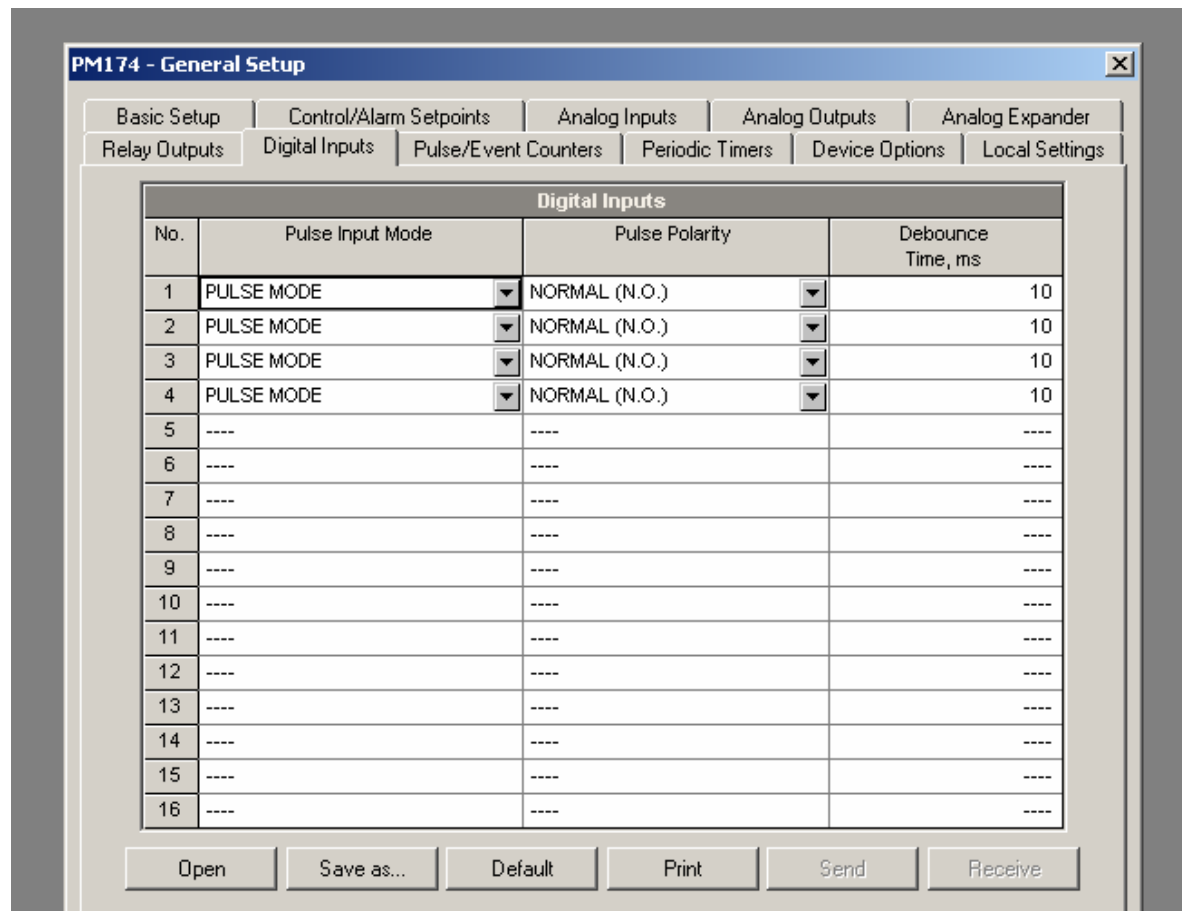


Fig. 2. Digital Inputs setup in PAS

Relay Outputs connection diagram is shown in the “PM174 Operation and Installation Manual” (Chapter 2 “Installation”, “I/O Connections”, “Relay Outputs”).

Relay Outputs setup is configured as described in the “PM174 Operation and Installation Manual” (Chapter 4 “PAS Application Software”, “General Meter Setup”, “Using Relay Outputs”).

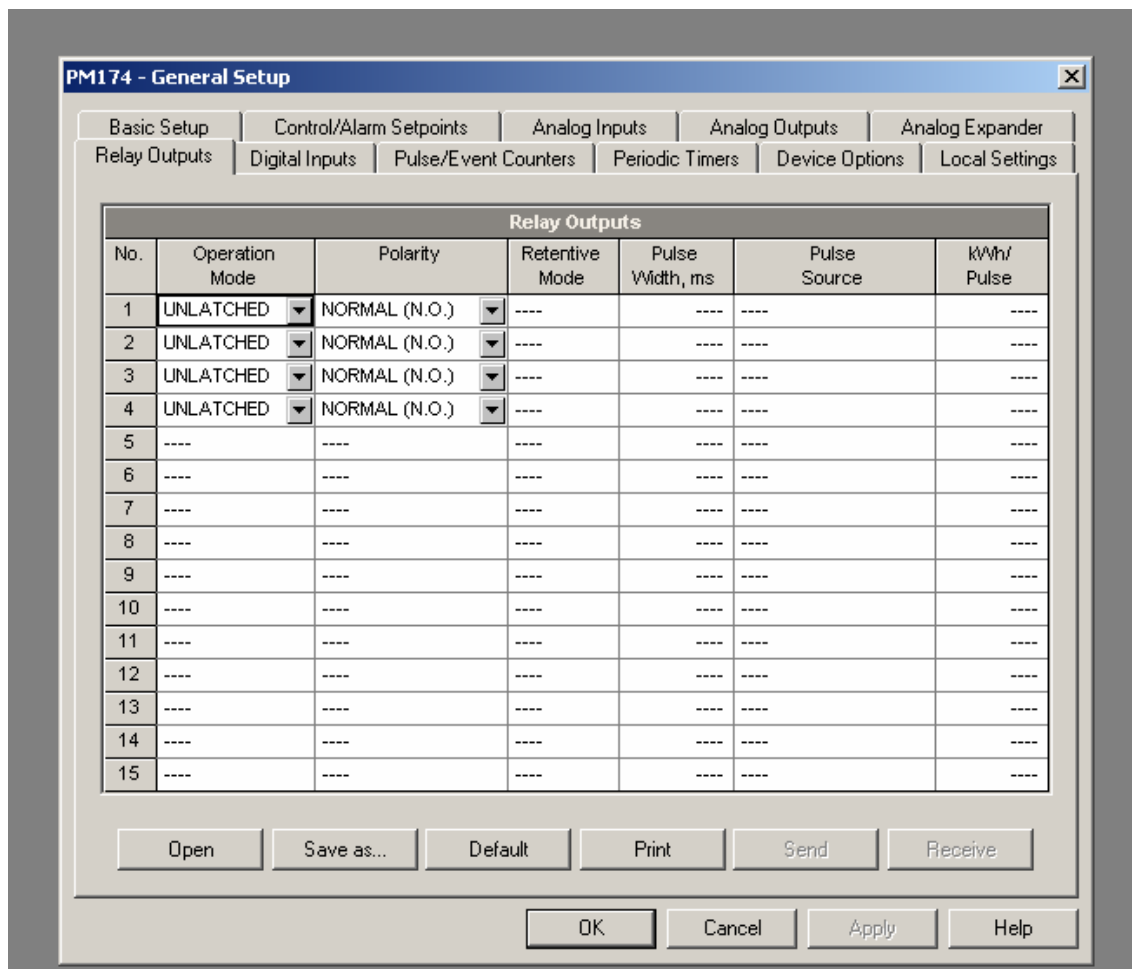


Fig. 3. Relay Outputs setup in PAS